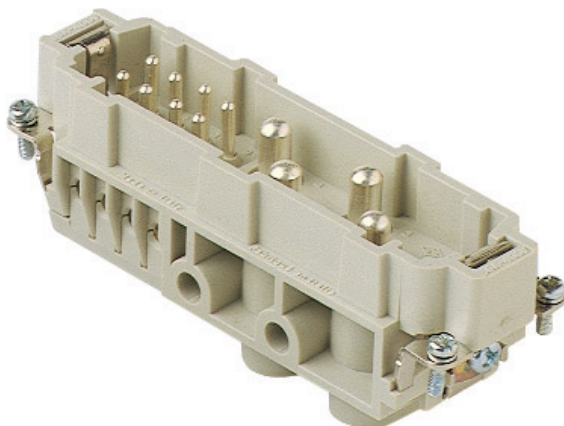



## Product Sheet

**Part Number:** CXM 4/8



<b>Family</b>	CLASS insert series
<b>Version</b>	screw terminal connections
<b>Series</b>	CX
<b>Product type</b>	with male contacts
<b>Model</b>	male insert
<b>Reference standard</b>	EN 61984 (2001-11)
<b>Contact type</b>	silver plated
<b>No. of poles</b>	4 poles + ⊕
<b>Auxiliaries poles</b>	8 poles (16A max - 230/400V/4kV/3)
<b>Voltage (V)</b>	400V
<b>Current (A)</b>	80A (A.C./D.C.)
<b>Wire section</b>	4mm <sup>2</sup> - 16mm <sup>2</sup>
<b>Awg size</b>	12 - 6
<b>Quality mark</b>	
<b>IP degree of protection</b>	IP20 degree of protection without enclosure; IP65, IP66, IP67, IP68 (EN 60529) and IP69K (DIN 40050 - 9) with enclosure

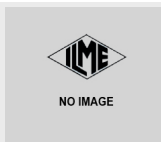
The information and the dimensions contained are not binding and may be changed without prior notice.  
The drawing's dimensions are in mm.

**Fixing centre distance** size "104.27"

**Impulse withstand voltage** 6kV

**Pollution degree** 3

**Notes**



CXF/M 4/8 inserts  
 80A contacts  
 - without plate for section conductors:  
 4 - 16 mm<sup>2</sup> - AWG 12 - 6  
 - conductors stripping length: 14 mm  
 - terminal screw torque: 2.5 Nm  
 16A contacts  
 - with plate for section conductors  
 0,75 - 2,5 mm<sup>2</sup> - AWG 18 - 14  
 - conductors stripping length: 7 mm  
 - terminal screw torque: 0.5 Nm  
 - characteristics according to EN 61984:  
 80A 400V 6kV 3  
 80A 400/690V 6kV 2  
 16A 230/400V 4kV 3  
 16A 400V 4kV 2  
 - rated voltage according to UL/CSA: 600V  
 - insulation resistance: > 10 GOhm  
 - ambient temperature limit: -40 °C ... +125 °C  
 - are made of self-extinguishing thermoplastic resin UL 94 V0  
 - mechanical life: > 500 cycles  
 - contact resistance: < 0,3 mOhm (4 poles) < 1 mOhm (8 poles)  
 - inserts for applications with temperatures up to 180 °C, available on request  
 - enclosures: size 104.27:  
 C-TYPE IP65/IP66  
 C7 IP67 stainless steel lever  
 V-TYPE IP65/IP66  
 stainless steel lever  
 T-TYPE IP65 insulating  
 JEI zinc-plated steel lever  
 BIG hoods  
 aggressive environments  
 EMC  
 central lever  
 IP68  
 - panel supports: COB

The information and the dimensions contained are not binding and may be changed without prior notice.  
 The drawing's dimensions are in mm.